

MILDE 1

RGB LED full colour

FARETTO RGB con 1 LED da 3 W

Corpo: acciaio inox AISI 316.

Vetro: trasparente.

Consumo: 4,0 W.

Da utilizzarsi con Modulo Controllo Colore SQR/RGB (pg. 200) o DMX-S2 (pg. 198) o DMX-S3 (pg. 200).

Installazione

Tramite molle.

SPOTLIGHT RGB with 1 LED 3 W

Body: stainless steel AISI 316.

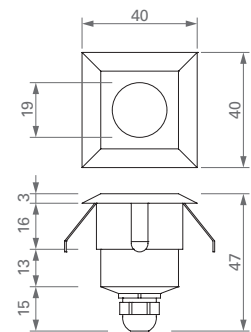
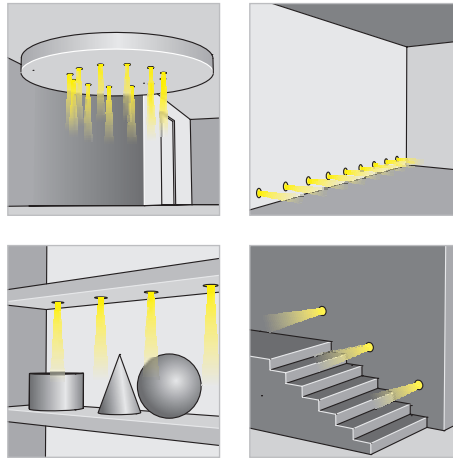
Glass: transparent.

Consumption: 4.0 W.

To be used with Colour Control code SQR/RGB (pg. 200) or DMX-S2 (pg. 198) or DMX-S3 (pg. 200).

Installation

By springs.



DIMENSIONI / DIMENSIONS



608-01- 99

CODICE / CODE



CE IP65 ø33

ASTER 1

RGB LED full colour

FARETTO RGB con 1 LED da 3 W

Corpo: acciaio inox AISI 316.

Vetro: trasparente.

Consumo: 4,0 W.

Da utilizzarsi con Modulo Controllo Colore SQR/RGB (pg. 200) o DMX-S2 (pg. 198) o DMX-S3 (pg. 200).

Installazione

Tramite molle.

SPOTLIGHT RGB with 1 LED 3 W

Body: stainless steel AISI 316.

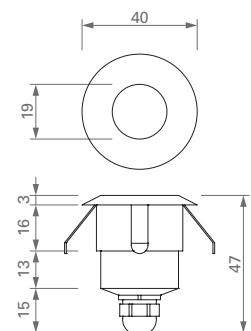
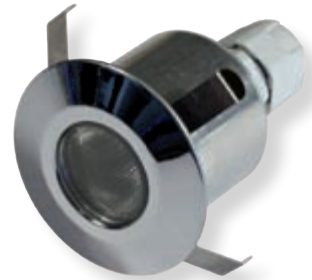
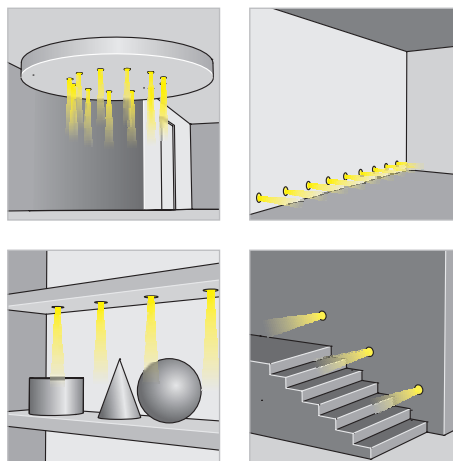
Glass: transparent.

Consumption: 4.0 W.

To be used with Colour Control code SQR/RGB (pg. 200) or DMX-S2 (pg. 198) or DMX-S3 (pg. 200).

Installation

By springs.



DIMENSIONI / DIMENSIONS



609-01- 99

CODICE / CODE



CE IP65 ø33