

## EDAGA 1

### SEGNAPASSO PIATTO con 14 LED SMD

Vetro: trasparente.

Alimentazione: in corrente continua 24 V.

Collegamento in parallelo.

Consumo: 1,2 W.

Alimentatore consigliato: cod. TRDC/24V (pg. 183).

#### Installazione

Tramite cassaforma in alluminio (inclusa).

#### FLAT LIGHT FITTING with 14 SMD LEDs

Glass: transparent.

Supply current: 24 V constant.

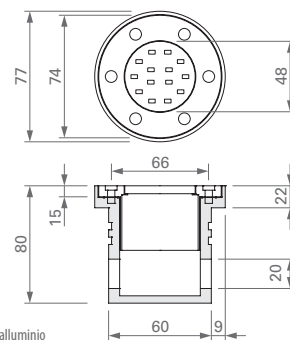
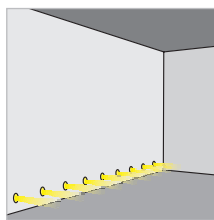
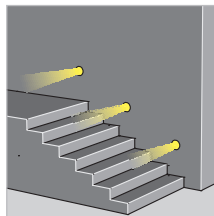
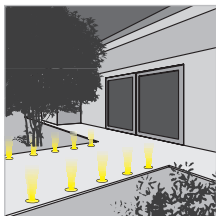
Parallel connection.

Consumption: 1.2 W.

Led power supply: code TRDC/24V (pg. 183).

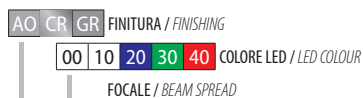
#### Installation

By aluminium recessed connection box (included).



Cassaforma in alluminio  
Aluminium recessed connection box

DIMENSIONI / DIMENSIONS



304-01- [ ] [ ] 00

CODICE / CODE



## HARAR 1

### SEGNAPASSO con 1 LED ø 5 mm

Corpo: acciaio inox AISI 316.

Vetro: satinato.

Alimentazione: in corrente continua 12 V. Collegamento in parallelo.

Consumo: inferiore a 0,2 W.

Alimentatore consigliato: cod. TRDC/12V (pg. 182).

#### Installazione

Tramite cassaforma (inclusa).

#### LIGHT FITTING with 1 LED ø 5 mm

Body: stainless steel AISI 316.

Glass: frosted.

Supply current: 12 V constant.

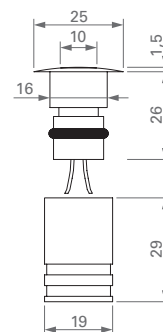
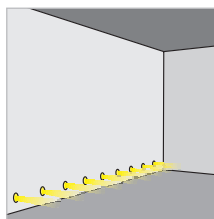
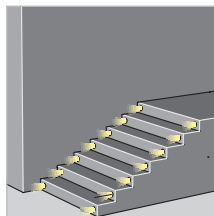
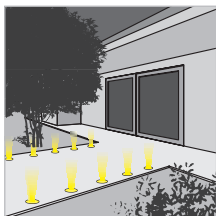
Parallel connection.

Consumption: 0.2 W.

Led power supply: code TRDC/12V (pg. 182).

#### Installation

By recessed connection box (included).



DIMENSIONI / DIMENSIONS



305-01- [ ] [ ] 00

CODICE / CODE

