

## ITEYA 1

### SEGNAPASSO con 1 LED da 1 W

Corpo: acciaio inox AISI 316.

Vetro: satinato.

Alimentazione: in corrente continua 350 mA.

Collegamento in serie.

Consumo: 1,4 W.

Alimentatore consigliato: cod. TRDC/350mA (pg. 185).

#### Installazione

Tramite cassaforma (inclusa).

#### LIGHT FITTING with 1 LED 1 W

Body: stainless steel AISI 316.

Glass: frosted.

Supply current: 350 mA constant.

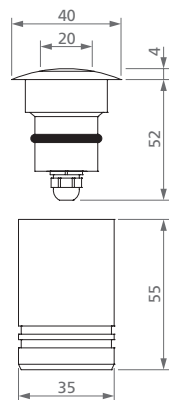
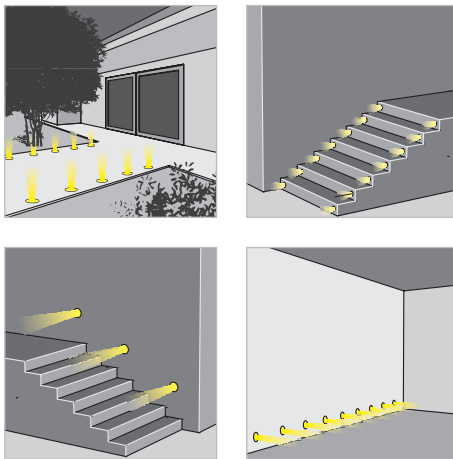
Serial connection.

Consumption: 1.4 W.

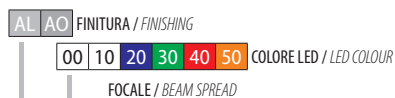
Led power supply: code TRDC/350mA (pg. 185).

#### Installation

By recessed connection box (included).



DIMENSIONI / DIMENSIONS



306-01-    00

CODICE / CODE



CE IP67 IP68 su richiesta on request

## ARBA 1

### SEGNAPASSO PIATTO con 9 LED SMD

Vetro: satinato.

Alimentazione: in corrente continua 24 V.

Collegamento in parallelo.

Consumo: 1,0 W.

Alimentatore consigliato: cod. TRDC/24V (pg. 183).

#### Installazione

Tramite cassaforma in alluminio (inclusa).

#### Versione con LED RGB

Per versione con LED RGB vedi OSCA 1 (pg. 54).

#### FLAT LIGHT FITTING with 9 LEDs SMD

Glass: frosted.

Supply current: 24 V constant.

Parallel connection.

Consumption: 1.0 W.

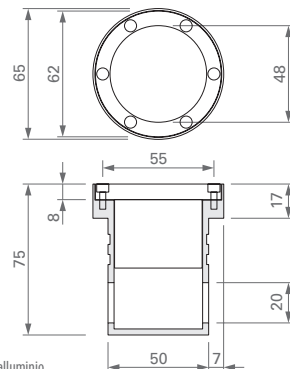
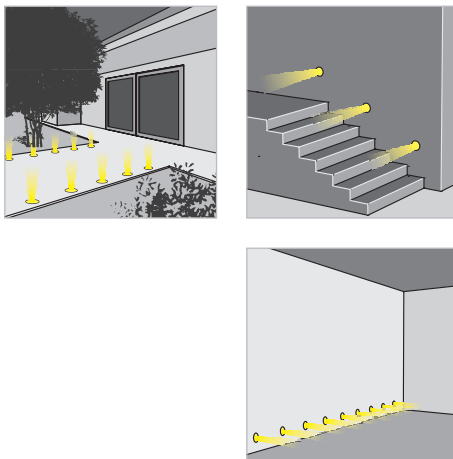
Led power supply: code TRDC/24V (pg. 183).

#### Installation

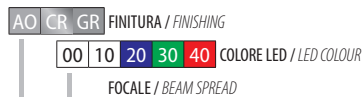
By aluminium recessed connection box (included).

#### LED RGB version

For LED RGB version see OSCA 1 (pg. 54)



DIMENSIONI / DIMENSIONS



307-01-    00

CODICE / CODE



CE IP67

Cassaforma in alluminio  
Aluminium recessed connection box