

## SEMIA 1

### FARETTO PIATTO con 3 LED da 1 W

Vetro: trasparente.

Alimentazione: in corrente continua 350 mA.

Collegamento in serie.

Consumo: 4,5 W.

Alimentatore consigliato: cod. TRDC/350mA (pg. 185).

#### Installazione

Tramite cassaforma in alluminio (inclusa).

#### Versione con LED RGB

Per versione con LED RGB vedi ASTIGI 1 (pg. 54).

### FLAT SPOTLIGHT with 3 LEDs 1 W

Glass: transparent.

Supply current: 350 mA constant.

Serial connection.

Consumption: 4.5 W.

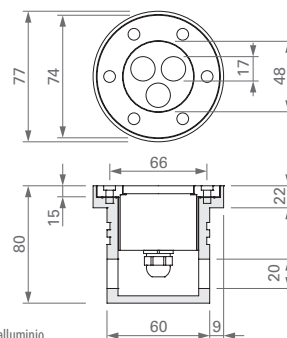
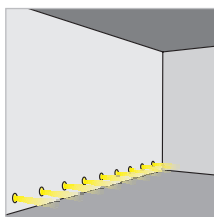
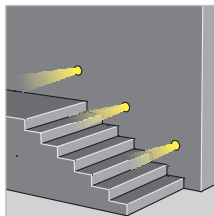
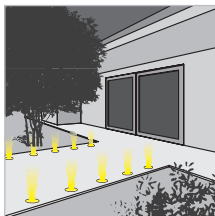
Led power supply: code TRDC/350mA (pg. 185).

#### Installation

By aluminium recessed connection box (included).

#### LED RGB version

For LED RGB version see ASTIGI 1 (pg. 54).



Cassaforma in alluminio  
Aluminium recessed connection box

DIMENSIONI / DIMENSIONS

AO	CR	GR	FINITURA / FINISHING				
00	10	20	30	40	50	COLORE LED / LED COLOUR	
01	03	04	FOCALE / BEAM SPREAD				

310-01-

CODICE / CODE



CE

## SEMIA 2

### FARETTO PIATTO con 3 LED da 3 W

Vetro: trasparente.

Alimentazione: in corrente continua 700 mA.

Collegamento in serie.

Consumo: 9,6 W.

Alimentatore consigliato: cod. TRDC/700mA (pg. 187).

#### Installazione

Tramite cassaforma in alluminio (inclusa).

#### Versione con LED RGB

Per versione con LED RGB vedi ASTIGI 1 (pg. 54).

### FLAT SPOTLIGHT with 3 LEDs 3 W

Glass: transparent.

Supply current: 700 mA constant.

Serial connection.

Consumption: 9.6 W.

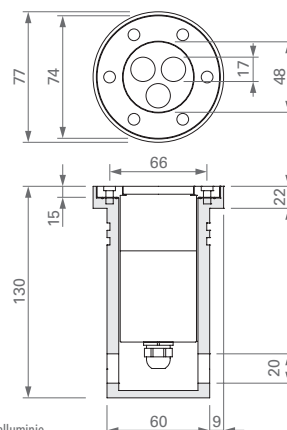
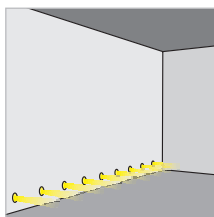
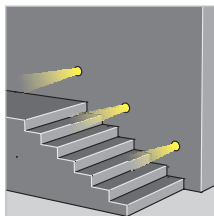
Led power supply: code TRDC/700mA (pg. 187).

#### Installation

By aluminium recessed connection box (included).

#### LED RGB version

For LED RGB version see ASTIGI 1 (pg. 54).



Cassaforma in alluminio  
Aluminium recessed connection box

DIMENSIONI / DIMENSIONS

AO	CR	GR	FINITURA / FINISHING				
00	10	20	30	40	50	COLORE LED / LED COLOUR	
01	03	04	FOCALE / BEAM SPREAD				

310-02-

CODICE / CODE



CE