

ACTIUM 1

FARETTO con 1 LED da 1 W

Corpo: acciaio inox AISI 316.

Vetro: trasparente.

Alimentazione: in corrente continua 350 mA.

Collegamento in serie.

Consumo: 1,4 W.

Alimentatore consigliato: cod. TRDC/350mA (pg. 185).

Installazione

Tramite cassaforma (inclusa).

SPOTLIGHT with 1 LED 1 W

Body: stainless steel AISI 316.

Glass: transparent.

Supply current: 350 mA constant.

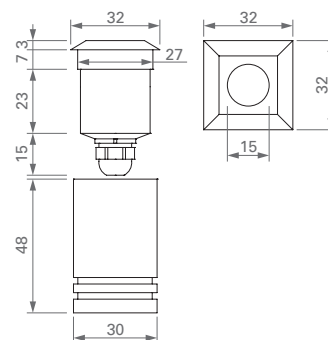
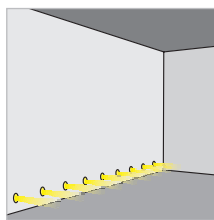
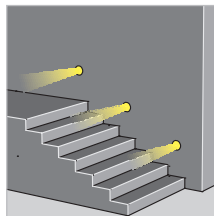
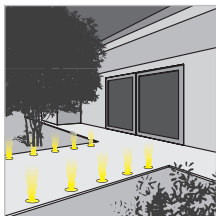
Serial connection.

Consumption: 1.4 W.

Led power supply: code TRDC/350mA (pg. 185).

Installation

By recessed connection box (included).



AL	AO	CR	GR	FINITURA / FINISHING		
00	10	20	30	40	50	COLORE LED / LED COLOUR
FOCALE / BEAM SPREAD						

311-01-

CODICE / CODE



CE su richiesta on request

DIMENSIONI / DIMENSIONS

LISSUS 1

FARETTO con 1 LED da 1 W

Corpo: acciaio inox AISI 316.

Vetro: trasparente.

Alimentazione: in corrente continua 350 mA.

Collegamento in serie.

Consumo: 1,4 W.

Alimentatore consigliato: cod. TRDC/350mA (pg. 185).

Installazione

Tramite cassaforma (inclusa).

SPOTLIGHT with 1 LED 1 W

Body: stainless steel AISI 316.

Glass: transparent.

Supply current: 350 mA constant.

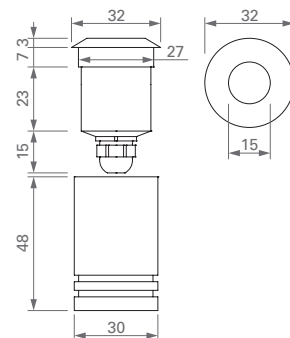
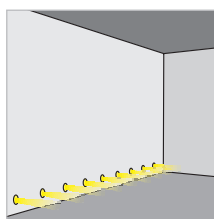
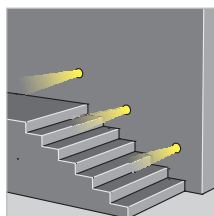
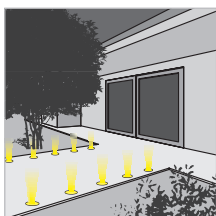
Serial connection.

Consumption: 1.4 W.

Led power supply: code TRDC/350mA (pg. 185).

Installation

By recessed connection box (included).



AL	AO	CR	GR	FINITURA / FINISHING		
00	10	20	30	40	50	COLORE LED / LED COLOUR
FOCALE / BEAM SPREAD						

314-01-

CODICE / CODE



CE su richiesta on request

DIMENSIONI / DIMENSIONS