

SIRMIO 1

FARETTO ORIENTABILE con 1 LED da 3 W

Vetro: trasparente.

Alimentazione: in corrente continua 700 mA.

Collegamento in serie.

Consumo: 3,2 W.

Alimentatore consigliato: cod. TRDC/700mA (pg. 187).

Installazione

Tramite viti con staffa orientabile (inclusa).

Versione con LED RGB

Su richiesta.

ADJUSTABLE SPOTLIGHT with 1 LED 3 W

Glass: transparent.

Supply current: 700 mA constant.

Serial connection.

Consumption: 3.2 W.

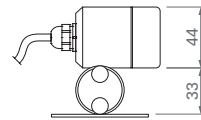
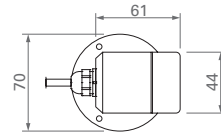
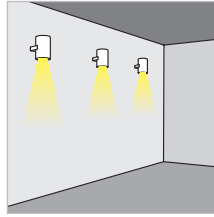
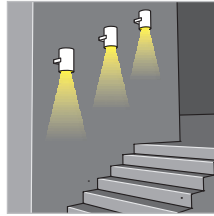
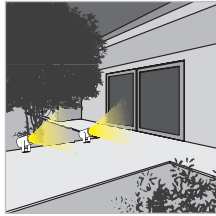
Led power supply: code TRDC/700mA (pg. 187).

Installation

Adjustable support with screws (included).

LED RGB version

On request.



DIMENSIONI / DIMENSIONS



320-01-

CODICE / CODE



SIRMIO 2

FARETTO ORIENTABILE con 3 LED da 3 W

Vetro: trasparente.

Alimentazione: in corrente continua 700 mA.

Collegamento in serie.

Consumo: 9,6 W.

Alimentatore consigliato: cod. TRDC/700mA (pg. 187).

Installazione

Tramite viti con staffa orientabile (inclusa).

Versione con LED RGB

Su richiesta.

ADJUSTABLE SPOTLIGHT with 3 LED 3 W

Glass: transparent.

Supply current: 700 mA constant.

Serial connection.

Consumption: 9.6 W.

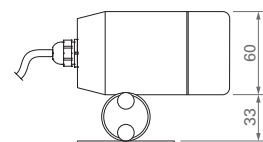
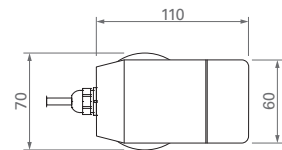
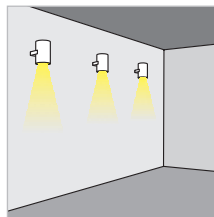
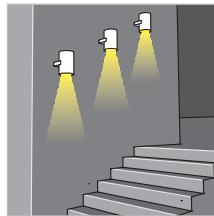
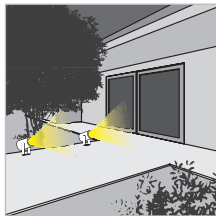
Led power supply: code TRDC/700mA (pg. 187).

Installation

Adjustable support with screws (included).

LED RGB version

On request.



DIMENSIONI / DIMENSIONS



320-02-

CODICE / CODE

