

NORBA 1

FARETTO FISSO con 1 LED da 3 W

Alimentazione: in corrente continua 700 mA.

Collegamento in serie.

Consumo: 3,2 W.

Alimentatore consigliato: cod. TRDC/700mA (pg. 187).

Installazione

Tramite dado di fissaggio.

Versione con LED RGB

Per versione con LED RGB vedi CELTIS 1 (pg. 122).

SPOTLIGHT with 1 LED 3 W

Supply current: 700 mA constant.

Serial connection.

Consumption: 3.2 W.

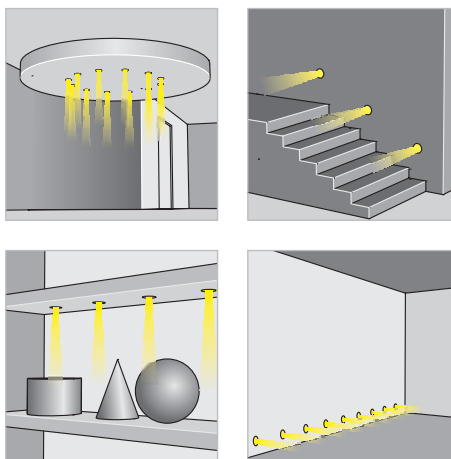
Led power supply: code TRDC/700mA (pg. 187).

Installation

By fixing nut.

LED RGB version

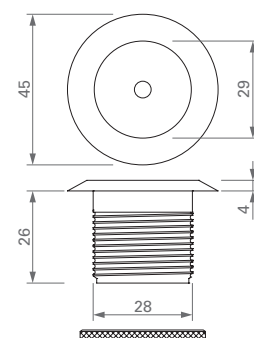
For LED RGB version see CELTIS 1 (pg. 122).



CR GR FINITURA / FINISHING
00 10 20 30 40 50 COLORE LED / LED COLOUR
01 03 04 FOCALE / BEAM SPREAD

402-01-

CODICE / CODE



DIMENSIONI / DIMENSIONS

TIBUR 1

FARETTO FISSO con 1 LED da 3 W

Corpo: acciaio inox AISI 316.

Alimentazione: in corrente continua 700 mA.

Collegamento in serie.

Consumo: 3,2 W.

Alimentatore consigliato: cod. TRDC/700mA (pg. 187).

Installazione

Tramite dado di fissaggio.

Versione con LED RGB

Per versione con LED RGB vedi BASSIA 1 (pg. 122).

SPOTLIGHT with 1 LED 3 W

Body: stainless steel AISI 316.

Supply current: 700 mA constant.

Serial connection.

Consumption: 3.2 W.

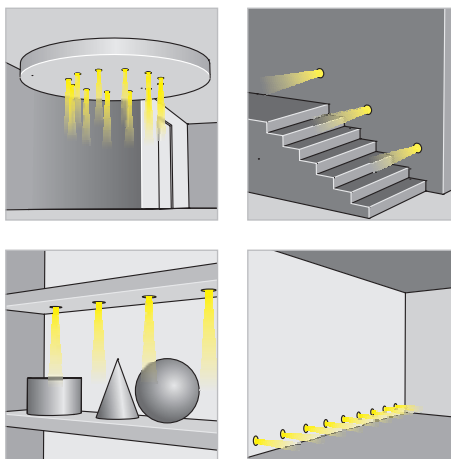
Led power supply: code TRDC/700 mA (pg. 187).

Installation

By fixing nut.

LED RGB version

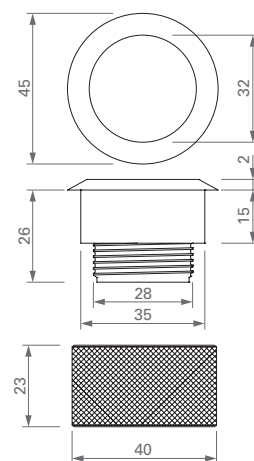
For LED RGB version see BASSIA 1 (pg. 122).



FINITURA / FINISHING
10 20 30 40 50 COLORE LED / LED COLOUR
01 03 04 FOCALE / BEAM SPREAD

403-01-

CODICE / CODE



DIMENSIONI / DIMENSIONS