

# NORA 1

## FARETTO FISSO con 1 LED da 1 W

Corpo: acciaio inox AISI 316.

Vetro: trasparente.

Alimentazione: in corrente continua 350 mA.

Collegamento in serie.

Consumo: 1,4 W.

Alimentatore consigliato: cod. TRDC/350mA (pg. 185).

### Installazione

Tramite molle.

### SPOTLIGHT with 1 LED 1 W

Body: stainless steel AISI 316.

Glass: transparent.

Supply current: 350 mA constant.

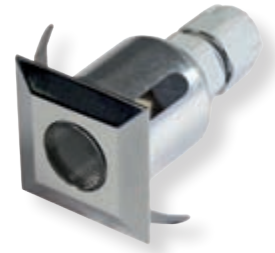
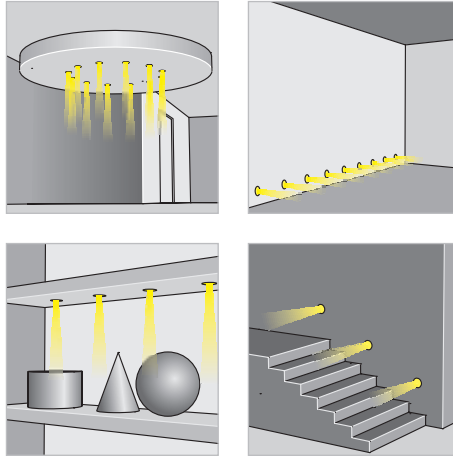
Serial connection.

Consumption: 1.4 W.

Led power supply: code TRDC/350mA (pg. 185).

### Installation

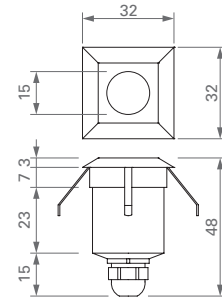
By springs.



AL	AO	CR	GR	FINITURA / FINISHING		
00	10	20	30	40	50	COLORE LED / LED COLOUR
FOCALE / BEAM SPREAD						

426-01-    06

CODICE / CODE



DIMENSIONI / DIMENSIONS

# OTHOCA 1

## FARETTO FISSO con 1 LED da 3 W

Corpo: acciaio inox AISI 316.

Vetro: trasparente.

Alimentazione: in corrente continua 700 mA.

Collegamento in serie.

Consumo: 3,2 W.

Alimentatore consigliato: cod. TRDC/700mA (pg. 187).

### Installazione

Tramite molle.

### Versione con LED RGB

Per versione con LED RGB vedi MILDE 1 (pg. 125).

### SPOTLIGHT with 1 LED 3 W

Body: stainless steel AISI 316.

Glass: transparent.

Supply current: 700 mA constant.

Serial connection.

Consumption: 3.2 W.

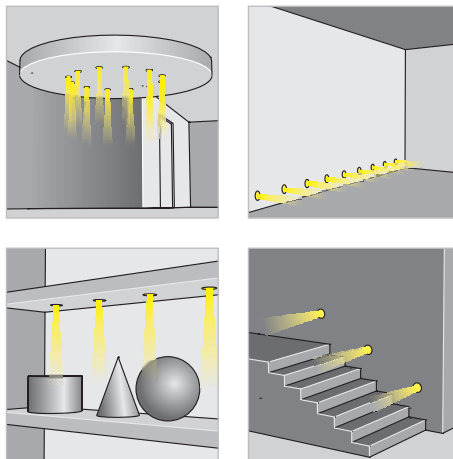
Led power supply: code TRDC/700mA (pg. 187).

### Installation

By springs.

### LED RGB version

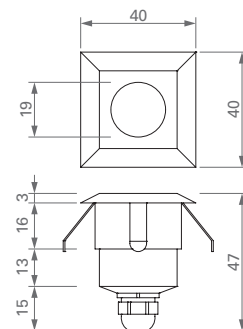
For LED RGB version see MILDE 1 (pg. 125).



AL	AO	CR	GR	FINITURA / FINISHING		
00	10	20	30	40	50	COLORE LED / LED COLOUR
FOCALE / BEAM SPREAD						

427-01-

CODICE / CODE



DIMENSIONI / DIMENSIONS